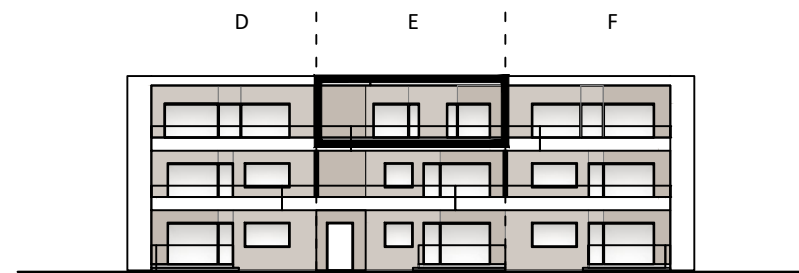
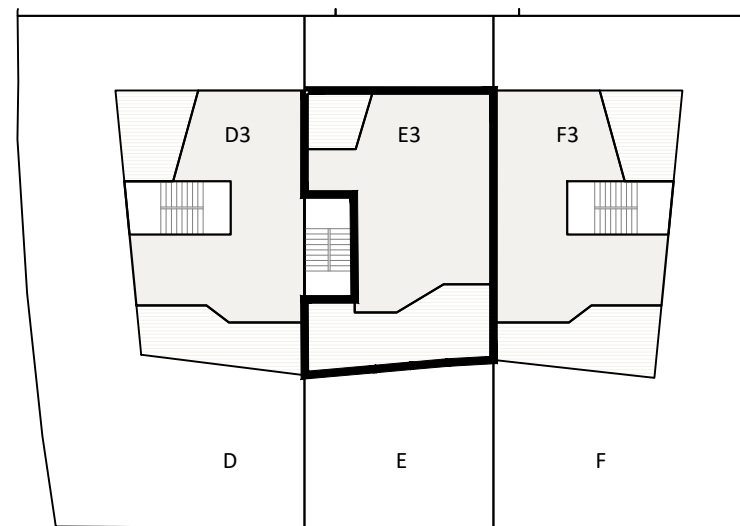


Shematski prikaz: Južno pročelje



Shematski prikaz: Tlocrt prizemlja



Tablica površina

STAN E3	neto (m2)
01. ULAZNI PROSTOR, HODNIK	8,53
02. DN. BORAVAK, KUHINJA I BLAGOVAONICA	23,58
03. SPREMIŠTE	2,41
04. KUPAONICA	4,43
05. SPAVAĆA SOBA 1	12,94
06. SPAVAĆA SOBA 2	11,52
07. TERASA 1	8,06
08. TERASA 2	23,01
<b>ukupno zatvoreno:</b>	<b>63,41</b>
<b>sveukupno:</b>	<b>94,48</b>

